



1-Up Series | Grantsville, UT
HIGHLANDS COMMUNITY
801.784.9100 | updwell.com



CONCORD: MODERN

3 bed | 2 bath | 3-car

2734 sq ft • Garage 641 Sq Ft



MODERN FARMHOUSE



MODERN

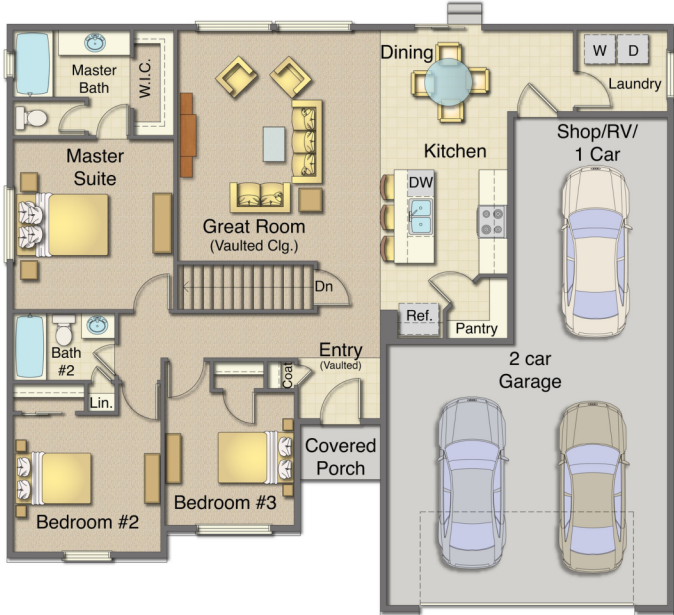
Equal Housing Opportunity. All home and community information, including but not limited to pricing, included features, terms, availability, and amenities, is subject to change at any time without prior notice or obligation. All renderings, photographs, colors, features, and dimensions are for illustrative purposes only. Square footage is approximate. For complete details, please consult a sales representative. [3/25/2026]



CONCORD: MODERN

MAIN FLOOR

1367 Sq Ft

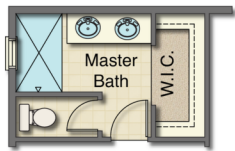


BASEMENT (UNFINISHED)

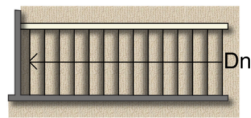
1367 Sq Ft



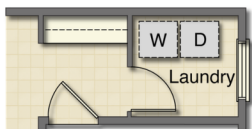
OPTIONS



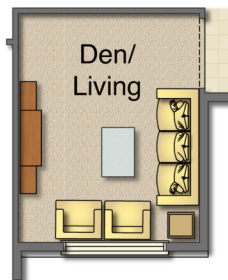
Master Bath



Finished Stairwell



Laundry Room with Hooks & Wing Wall



Den/Living at Bedroom #3

OPTIONAL BASEMENT APARTMENT

Accessory Dwelling Unit

